

# **Vehicle Fuel Checking Tracker**

## **Data Collecting Instructions**

## Catalogue

1、 Tracker Installation.....	3
2、 Configure in GIS Management System.....	3
3、 Register voltage value and fuel meter percentage.....	5
4、 Review Fuel Line.....	5

# Instructions

## 1、 TRACKER INSTALLATION


- ✧ Install as Wiring Diagram in the Manual
- ✧ If you need fuel checking, please connect fuel checking line to fuel line of fuel meter.
- ✧ Dial the mobile number in the tracker to check whether it works well after installation. If it connects, the tracker works well.

## 2、 CONFIGURE IN GIS MANAGEMENT SYSTEM

It needs to configure in GIS Management System to check fuel.

- ✧ Check whether the tracker is on-line.

1、 Open management software

2、 Click  ( or select Main Menu → System Setting → Send scheduling instructions)


3、 Select your fuel check tracker

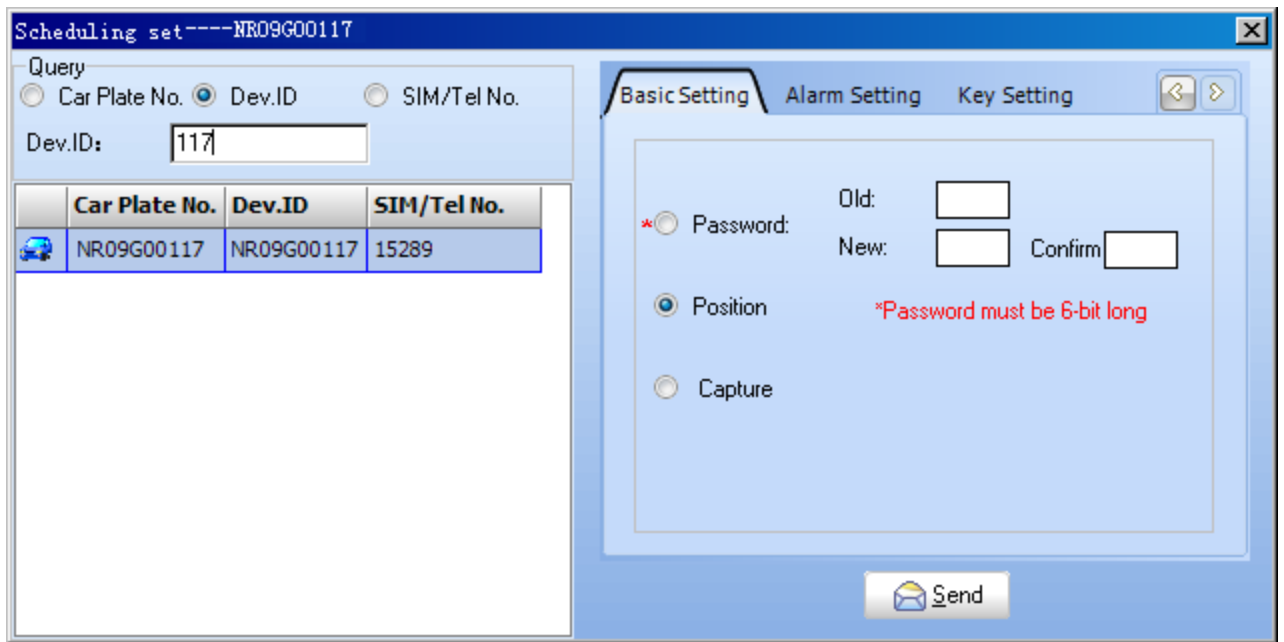
4、 Click 

5、 If a message replies Command send successfully, it shows the device is on-line.

6、 If a message replies Device is off-line, it shows the device fails to install. Please check the device.

- ✧ Get voltage value and fuel meter percentage

1、 Click , and then open Control setting.



2、 Select the tracker which need to check fuel as above: NR09G00117

3、 Click Report Location in the Basic Setting of right, then click 

4、 The tracker will reply the message as below:

Speed	Angle	Location	Time	Vehicle State
33	East	Located	2010-04-28 9:23:14	Power On,ACC On,Oil On 84
			2010-04-28 9:23:24	

5、 The last number 84 in Vehicle State, it's the voltage measure value.

6、 Read fuel value in the Fuel Meter meanwhile, e.g. the fuel meter percentage is 90%

7、 Record these values: voltage measure value 84, fuel meter percentage 90%.

8、 You can get the fuel parameter by SMS, the SMS format as follows:

**A000000,017,90** → **000000**( this one is password, please enter it by real situation) , **017** ( Check the oil voltage checking command data) , **90** ( 90% the fuel meter percentage )

9、 Reply Message similar to this: **Oil interval (90:84)**

10、 **90** (90%) indicates the fuel meter value which is in SMS , **84** indicates the fuel sensor line voltage

### 3、 REGISTER VOLTAGE VALUE AND FUEL METER PERCENTAGE

✧ Click Main Menu→System Manage→Fuel Table Manage, input the checking value

Car Plate No.	Dev.ID	SIM/Tel No.
NR09G00117	NR09G00117	152896

Please input the measure data

1	Measure Value1: 98	Oil Meter Value1: 99 %
2	Measure Value2: 74	Oil Meter Value2: 75 %
3	Measure Value3: 50	Oil Meter Value3: 50 %
4	Measure Value4: 26	Oil Meter Value4: 25 %
5	Measure Value5: 4	Oil Meter Value5: 0 %

Confirm Close

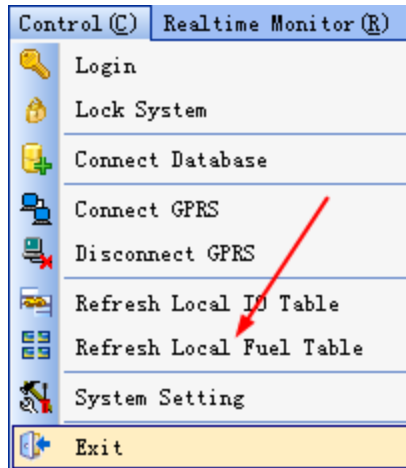
✧ Select the registering vehicle, double click on the left.

✧ There are at least 2 pairs data

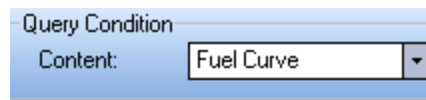
✧ Complete input, click Confirm button. The data is saved in database once it says Saved successfully.

### 4、 REVIEW FUEL LINE

✧ Firstly, please update local fuel meter: Main Menu→Control→Refresh Local Fuel Table

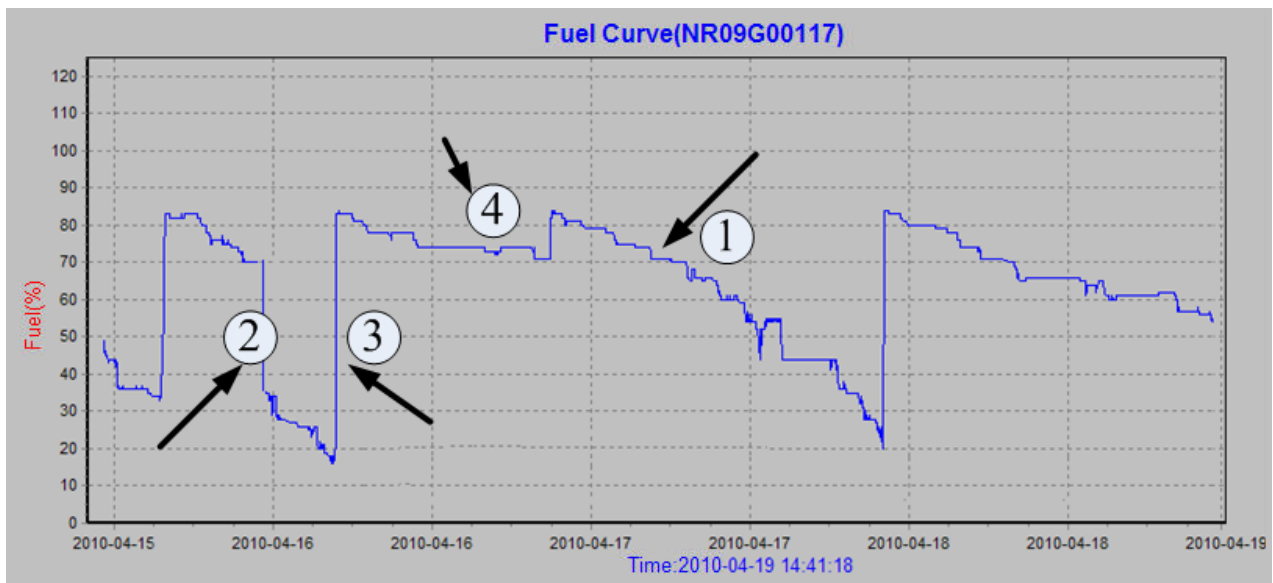


◇ Then click Summary: Main Menu→Report→Statistics



◇ Select Fuel Curve of Summary Content

◇ Then set time frame, at last click Query button to review.



◇ 1 shows normal consumption. The fuel decreases slowly.

◇ 2 shows abnormal consumption, decreases straightly. It may be fuel leak or fuel stolen.

◇ 3 shows fuel increases, it maybe fuel up.

◇ 4 shows no change in fuel. It may be in parking.